

## FLOWX FLX-Series NAMUR Solenoid Valve

**ONE SOLENOID FITS ALL FLOWX PNEUMATIC ACTUATOR MODEL--NO EXTRA PIPING REQUIRED**

### FEATURES AND BENEFITS

- Pilot operated spool valve technology
- 3/2 or 5/2 field convertible
- High flow 1.4 Cv
- Integral push-button manual override
- LED power indicator (standard)
- Rapid response time (up to 4 cycles/sec)
- 100% continuous duty cycle



Ideal for a variety of pneumatic actuator applications, including petrochemical, pulp and paper, filling equipment, food processing and water treatment.

Ideal for use on FLOWX spring return and double pneumatic acting actuators.

Adopt the special-purpose O type to enclose, twice needn't be lubricated.

The inside uses the wear-resisting part, stable life cycle, guaranteed 12000000 times

Various voltage and working style are available

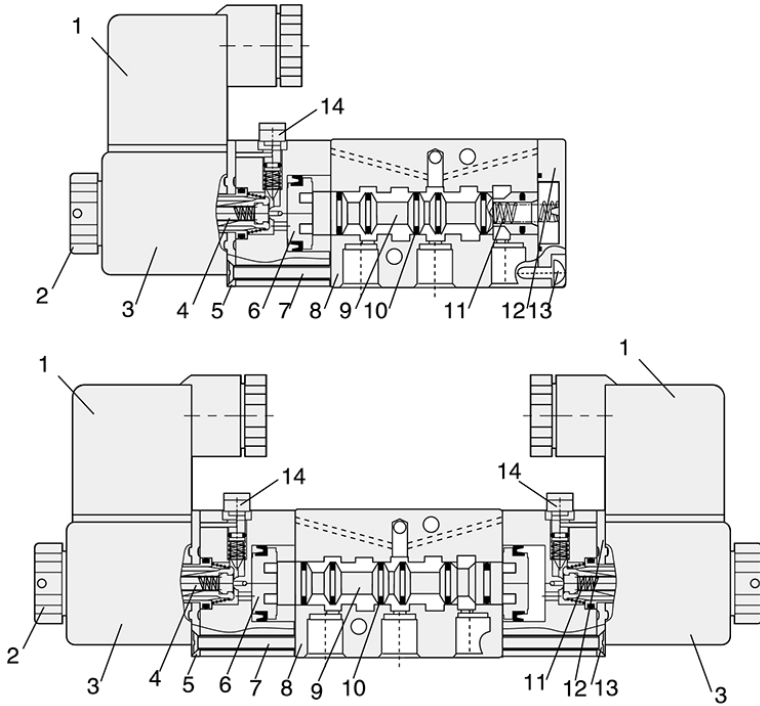
Different surface treatment, thread types (BSPP, BSPT, NPT) are available.

The manual switch designed, can test in situ after cutting out.

### TECHNICAL SPECIFICATIONS

Model	FLXC2/5 和 FLXC2/3(Single control)	FLXC2/5-S 和 FLXC2/3-S(Double control)
Working medium	Clean air (after 25µm filtration)	
Acting type	Pilot type	
Sectional area	30mm <sup>2</sup> (CV=1.68)	
Port size	IN=G3/8" EXHAUST=G1/4"	
Lubrication	Not required	
Working pressure	1.5-8bar	
Guaranteed pressure	12bar	
Working temperature	-5℃~60℃	
Voltage range	-15%~10%	
Power consumption	AC: 5.5W DC: 4.8W	
Insulation	Class F	
Protective class	IP65	
Max. acting frequency	4 cycles/s	
Activate time	0.05 秒	
Weight	300g	409g

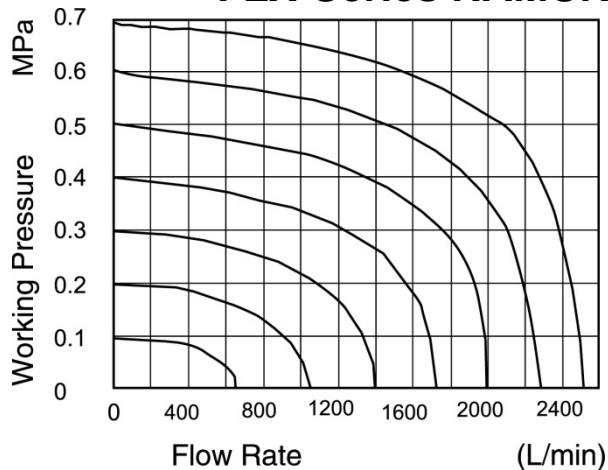
## FLX-Series NAMUR Solenoid Valve Internal structure



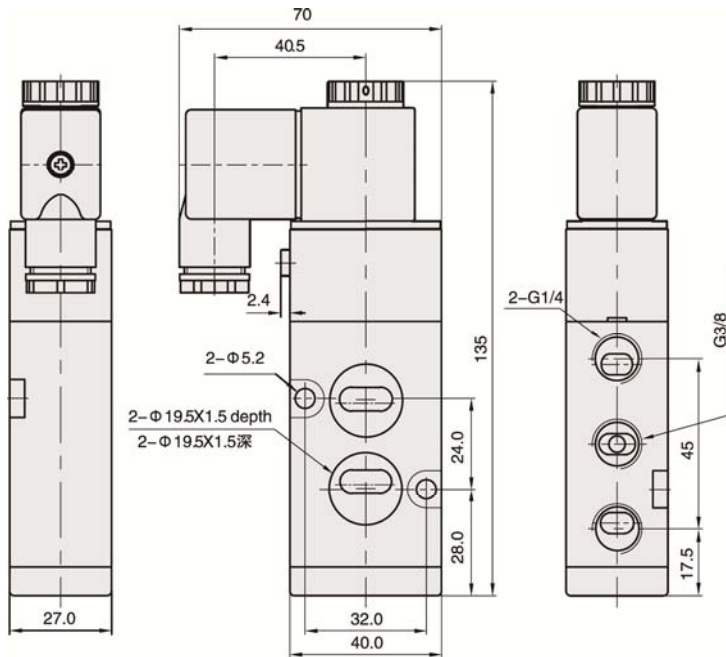
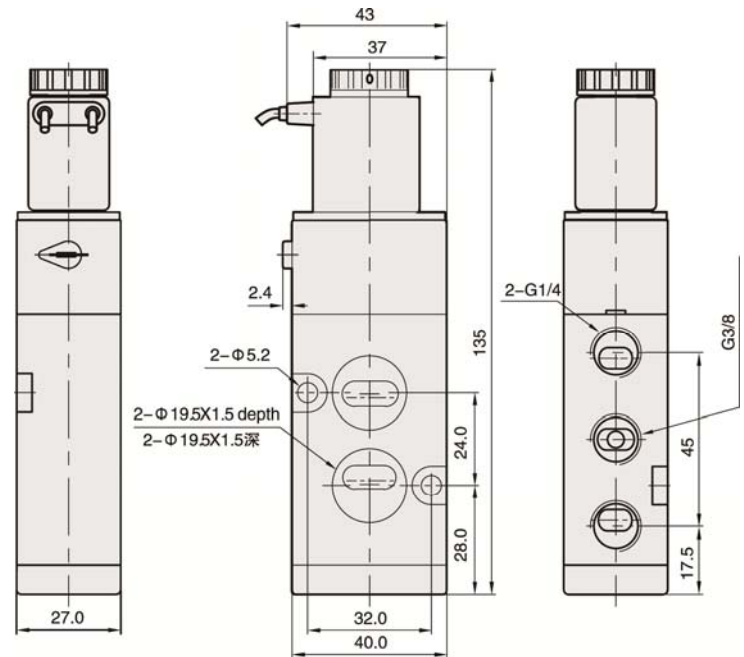
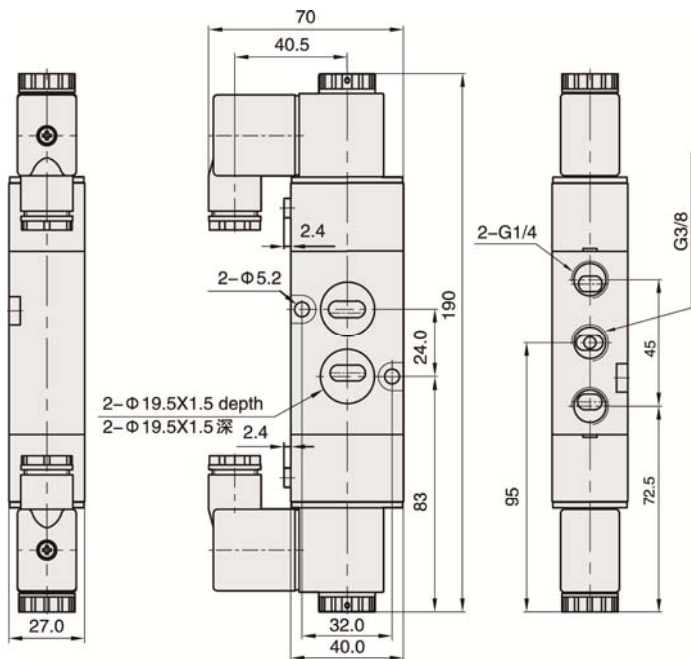
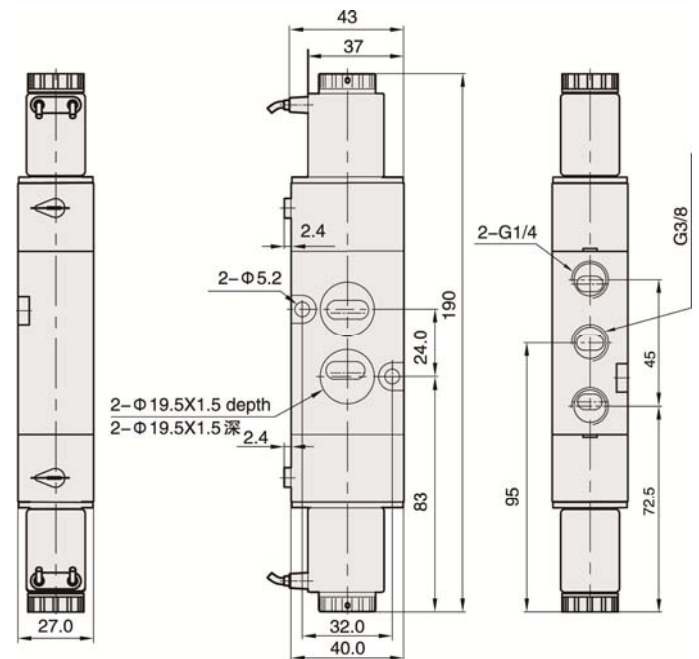
No.	Designation
1	Connector
2	Nut
3	Coil
4	Pilot units
5	Plate
6	Piston
7	Screw
8	Valve body
9	Spool
10	O-ring
11	Spring
12	Rear cover
13	Screw
14	Manual override

Part Name	Material
Valve body	Aluminum alloy
Spool	Aluminum alloy
Manual override O-ring	NBR
Connector washer	NBR
Spool O-ring	HNBR
Seal	NBR
Piston	POM
Manual override	Plastic
Plate	Steel
Nut	POM + Carbon steel
Rear cover	Zinc alloy
Manual override spring	Stainless steel
Spool spring	Stainless steel
Screw	Steel
Pilot units	Pure steel + Cu + Stainless steel
Connector	Engineering plastic

## FLX-Series NAMUR Solenoid Valve Flow Chart



## FLX-Series NAMUR Solenoid Valve Main Dimension (mm)

**Single control DIN type**

**Single control Flying Leads type**

**Double control DIN type**

**Double control Flying Leads type**


## MANUAL OVERRIDE OPERATION

The manual override allows for manual operation of the valve when in the de-energized state or upon loss of power. To operate the manual override, first turn the electrical supply off. Then to open the valve press and turn the manual override screw clockwise 1/4 turn so that the slot is in line with the solenoid. Before energizing the valve, return the override button to the closed position.